

COMMUNITY CONSERVATION IN BUCKS COUNTY



Vol. 2
December 1 2025

TOP NEWS

Grant Opportunities – Open Application Periods

- **Trees for Watersheds**
(PHS/AQUA/DEP)
- **BCCD Water Quality Fund**
Mini-grant (Nov-Feb)
- **PA DCNR Community Conservation Partnership Program (C2P2)**
- **Protect Your Drinking Water**
– limited to Neshaminy Watershed (PEC/Essential Utilities)



Rain Barrel Reminder!

Winterize your rain barrel!

1. Disconnect - *from downspout & hose*
2. Drain - *get it all out*
3. Clean - *vinegar & dish soap*
4. Store - *inside or upside down*
5. Secure - *from wind*



Winter Salt

Deicing salts keeps roads drivable in winter weather. But, they have a lasting effect. Freshwater streams and groundwater show higher salinity year round - even in the sensitive growing & reproductive season. This interrupts lifecycles in stressed aquatic systems, making them even more vulnerable.

A regional initiative by Stroud Water Research Center uses community science volunteers to collect snapshot data on salt levels in our local waterways. See the results of the **October 2025 Saltwatch**, and watch a 5-minute video about the issue. Our own Penn State Extension - Master Watershed Stewards of Bucks County, the Neshaminy Watershed Association, and others participate in Stroud's work.

At home, if you use rock salt, use only as much is necessary, sweep up and reuse leftovers, and try **making your own brine**.

Private Land Stewardship



A community of Bucks County residents are taking on the hard work of habitat restoration. From small lots to tens of acres of woods, they remove invasive plants and replace them with wildlife supporting and water cleaning native plants and trees. Enrolled in an NRCS EQIP program for forest conservation, the Northampton township property pictured above had a revitalization in 2025. This site is a lesson in growing potential.

COMMUNITY CONSERVATION IN BUCKS COUNTY

December 1 2025

Vol. 2

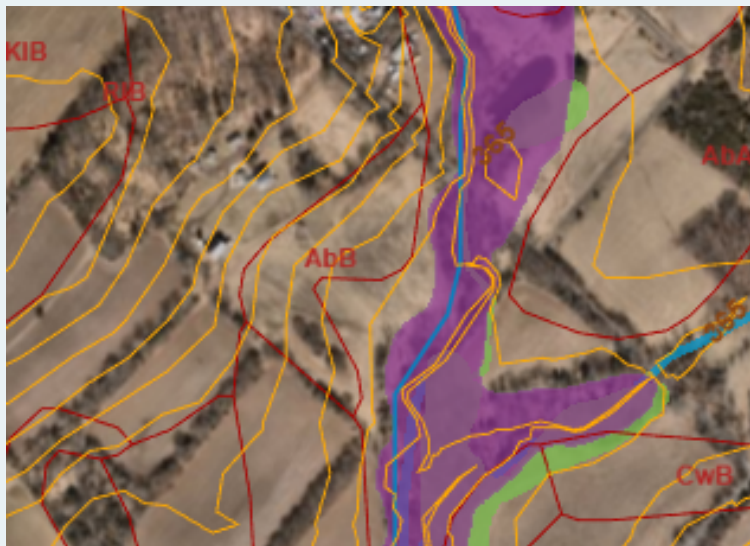
Christmas Tree Revetments

Banks of ditches and small streams erode with big stormflows. That erosion creates sediment pollution in our creeks and streams. One way to slow erosion and build back the bank is to install Christmas tree revetments. Using streamside anchors and steel cable, after season Christmas trees (free of decoration) can be secured to eroding cutbanks to buffer them against the force of water. Partners installed the revetment shown below in Peace Valley Park.

This practice is NOT SUITABLE for streams with drainage areas larger than 100 acres. Check with the Conservation District before planning work.



Agricultural Plans



Sustainable management of agricultural lands has a unique set of challenges, costs, and rewards. The first step is to develop an Agricultural Conservation Plan. This may expand into plans for sedimentation and erosion control, as well as for nutrient or manure management. For active farms and those being considered for conservation easement, financial assistance is available for such planning. The plans can guide current and future activities so that agricultural land remains productive for future generation. For more information, contact CSeldow@BucksCCD.org.

**LATE
notice!!**

Southeast PA Engineers Workshop

December 5th, 9:00AM – 3:00PM

Hosted by Southeast PA RC&D Council / SE PA Conservation Districts

Penn State Great Valley

30 East Swedesford Rd, Malvern PA 19355

Conference Center building auditorium

**NPDES DESIGN
design
engineers &
consultants**

Agenda

Register

Pay

1



2



3

