

# NEWSLETTER

# Green & Growing :

Community Conservation in Bucks County



MAY UPDATE

## A Networking Workshop - Green and Growing 2026

When municipal government has access to and relationships with the conservation community - a network of passionate, creative, and resourceful environmental advocates - great things happen.

The Bucks County Conservation **Community** has demonstrated this over and over again - Bird Towns, Single Use Plastic Bans, Climate Action Plans, Dark Skies, Pollinator Gardens and more. Let's gather to learn, trade ideas & approaches, and build connections.

Organized by Penn State Extension Master Watershed Steward Program and the Bucks County Conservation District, the event will bring local speakers, interactive displays, and social connection to our community. A \$15 ticket will cover light fare - please bring your own water/beverage bottle.

4-8 pm 6/11  
Honey Hollow E.C.



Register  
HERE!



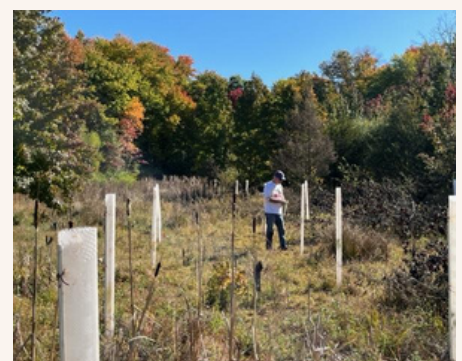
2024

2025



## A Tree Buying Partner

It's not too early to build your fall tree order. This year, consider working with Penn State Extension to order native trees from Octoraro, minus the shipping minimum order or fee! This supports our local Watershed Steward program, too!



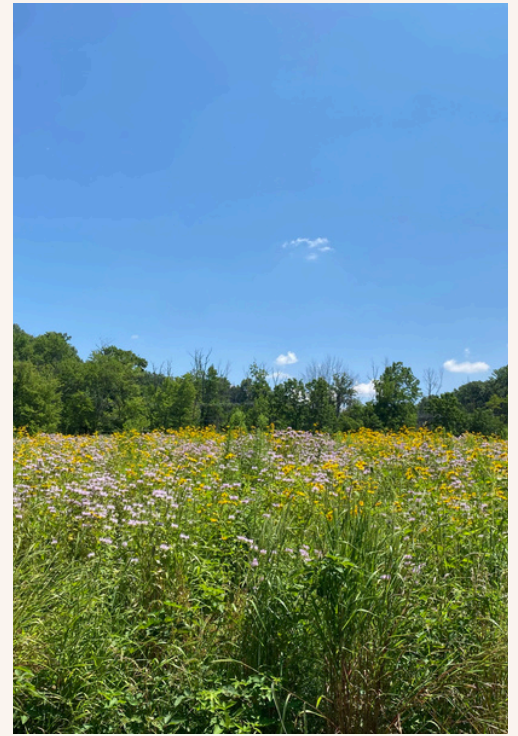
Contact Kathleen Connally at [Kxc30@psu.edu](mailto:Kxc30@psu.edu).

## Turf to Meadow

We've seen a renewed push to restore habitat where manicured turfgrass reigns. This, to enhance biodiversity, restore ecosystem function, and to help us manage drought and flood.

Pennsylvania Environmental Council (PEC) has partnered with Quakertown based Archewild to train land managers on the planning and practice of meadow installations. The first workshop was held in March in Bristol township, the next will be in Montgomery County. Field lessons are scheduled for both counties this summer. Contact Paul Racette for dates and time - [pracette@pecpa.org](mailto:pracette@pecpa.org).

Meanwhile, the **Heritage Conservancy** is working with the Neshaminy Watershed Association and the District to share their work installing and maintaining meadows at their preserves. They will lead a municipally focused field workshop on July 10 (10am -noon) at the Russell-Mandell Preserve in New Hope. What do Bucks County land managers need to know about meadows?



[Meadows! Register Here](#)

## Opportunity for Private Pond Owners



The Penn State Extension Water Resources team is recruiting **private pond owners or managers** to participate in a six-month pond monitoring study. This project brings together Penn State researchers & educators, and pond owners to document how pond water quality conditions and aquatic life characteristics vary across the state.

No prior experience is needed. A live interactive online training sessions will be provided with all monitoring tools and protocols designed for non-experts. Additionally, all participants will receive a free pond water kit for laboratory testing.

[More Info: Pond Monitoring](#)

## Open Grants

**PA DEP Growing Greener Plus**



**Schuylkill Highlands**

Mini-grant



**PA DCED Watershed**

Restoration & Protection



**Bucks County Conservation District**

WQF Mini-grant



**The Essential Foundation**

for non-profits



**Healing the Planet**

Giant

